

A close-up photograph of a black and white cow's head, looking slightly to the left. The cow has two yellow identification tags hanging from its ears. The tag on the left ear has the text "CZ 932 467575". The tag on the right ear has the text "CZ 467575932 263219-332 PPH-954". The background is a blurred barn interior with wooden beams and other cows.

ERSTA

THERMAL CAMERAS

Alerting you in time to any concerning
changes in hoof surfaces

Continuous noncontact monitoring

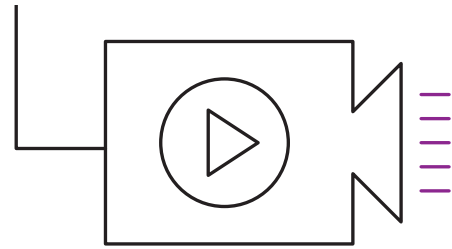
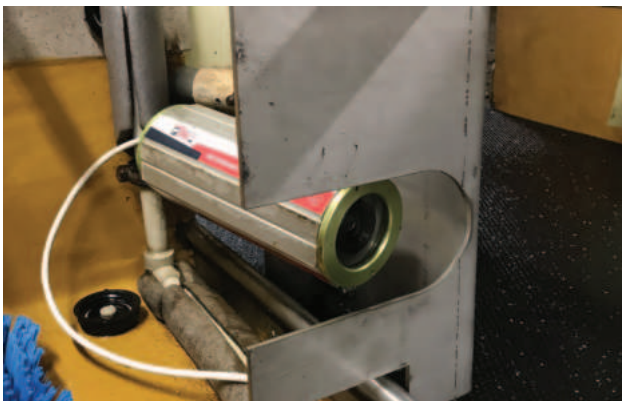
| Better health

| Healthy hooves

ERSTA THERMAL CAMERAS ERSTA TIC

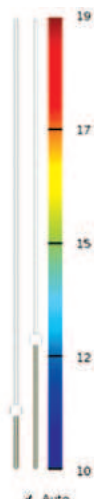
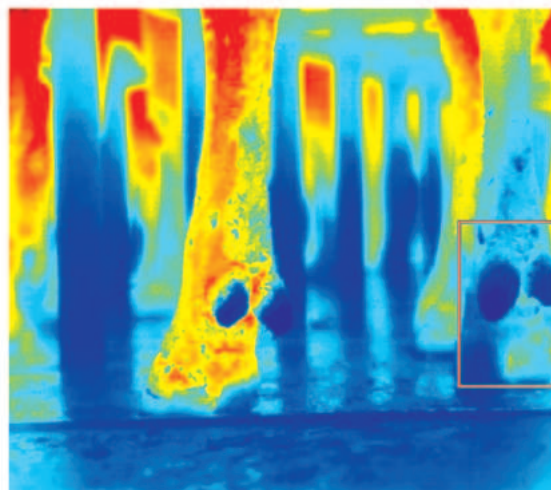
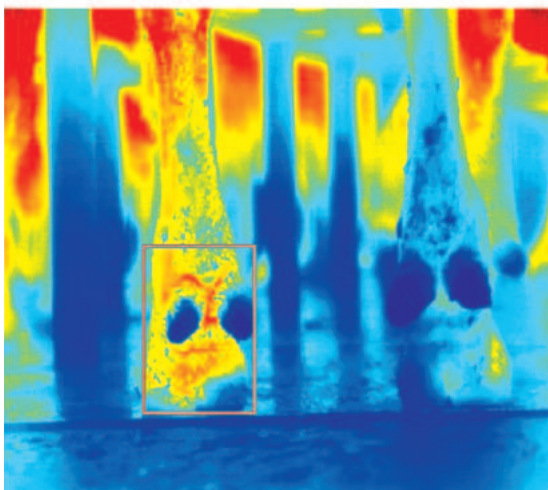
Our unique thermal camera system allows for continuous non-contact monitoring of cows' hooves, alerting you in time to any concerning changes in hoof surfaces.

Thermal cameras automatically and continuously monitor cows' hoof health without any contact, measuring hoof surface temperature while cows are walking. An increase in temperature signals an infection much earlier than symptoms, such as limping, occur.



Key light system parameters

- Autonomous and non-stop herd monitoring
- **The system identifies affected cows in the early stages of the infection, preventing developing problems and losses**
- Lower costs for treating sick cows
- The system is fully automated, not requiring any further data analysis by the operator.
- The monitoring does not disturb or restrict the cows.
- The system can easily be interconnected with your existing barn technologies.
- We provide follow-up maintenance and calibration in an accredited calibration lab.
- Dramatically decreased measurement time demands.
- Minimised false positive rate compared to manual measurements or simple pseudo-automated systems.



TECHNICAL SPECIFICATION

System range

Inputs	1 – 8 entry races
Evaluation and visualisation interface	Combined for all entry races

Thermal camera

Resolution	640 x 480 pixels
Refresh rate	30 Hz
NETD	< 50 mK
FOV (location dependent)	37 x 25°, 18 x 13°, 12 x 90°
Camera housing	IP67 waterproofed

Camera

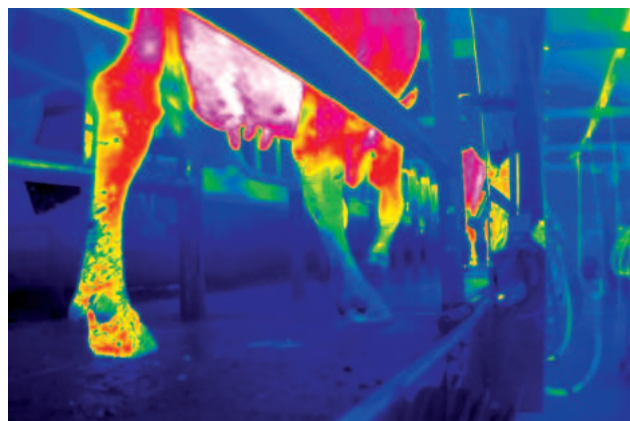
Resolution	2688 x 1520 px
Refresh rate	25 Hz
FOV (location dependent)	88°

System Specification

Computational unit	Data server included (calculations, database, historical trends, overviews and recommendations generated, notification rules configuration, reports, data export)
Data processing	Proprietary algorithm, Machine vision
Notification configuration	Locomotion score LS 1-5, tdiff
Livestock identification database	Imported from existing database
Language internationalisation (software, documentation)	Cze (on request Eng, Ger, Fre, Ita, Spa, Rus, Jpn)
Herd Identification RFID	Existing detection gate, or installation of an individual reader

System Integration and Requirements

Cabling	Components interconnected by cables
Power supply requirements	230V, 50Hz
System installation and start up	Provided by the supplier
Training	Part of delivery
Support / Hotline	24/7, preferred VPN data server access
Long term support	Guaranteed, Optional – after warranty service agreement



ERSTA s.r.o.

Chlebov 77
392 01 Soběslav
Czech Republic

+420 702 202 357
petrgondek@ersta.com
www.ersta.com