

A photograph of a brown and white cow standing on a dark, textured rubber floor in a barn. The cow is looking directly at the camera. In the background, there are metal railings and another cow. The floor is made of dark, rectangular rubber mats.

ERSTA

RUBBER FLOORING

Rubber floor are becoming increasingly popular for dairy cattle barns

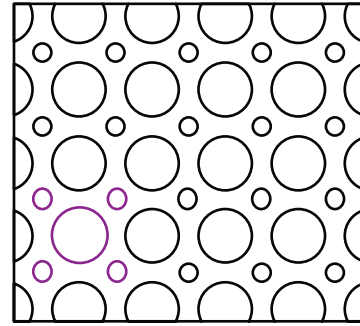
Soft surface

Anti-slip

Good insulation

More comfort

Rubber floor are becoming increasingly popular for dairy cattle barns – they are flexible, anti-slip and provide good insulation.



The soft surface provides more comfort for cows when walking and resting, as cows are less prone to joint damage or chills.

We offer several types of rubber flooring:

MAXGRIP MAT

This high-quality rubber mat has been designed specifically for confinement barns where extra traction is the number one objective. Producers have requested mats with additional traction to overcome slippage in challenging applications. Therefore, this rubber mat has been designed to accomplish these goals and yet maintain the level of comfort that Animat provides for the maximum performance of your cattle on difficult floors. The diamond-shaped surface has been tested and is sure to improve your animals' confidence.

Furthermore, the Maxgrip rubber flooring for the slatted floor has an anchoring system that will keep the mat in place no matter what. It's an easy to install solution that has been tested and prove.

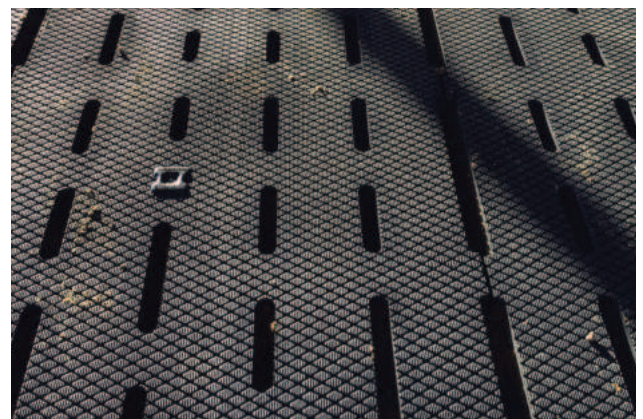
Uses

- Confinement barns
- Walking alley
- Slatted floors
- Incline floors
- And more...



Specifications

- | | |
|--------------|--------------------------|
| • Thickness | 20,5 mm |
| • Max length | 1,83 m |
| • Max. width | 1,22 m |
| • Weight | 20,6 kg / m ² |



CHUTE MAT FOR WORKING AREA

The chute mat is a superior answer to the issue of injuries due to falls to cattle around cattle working areas. The chute mat is a 4'x 6' rubber mat with the surface covered with round studs of alternating heights. This surface instantly grips the hoof resulting in extreme traction even after many cattle have passed over the mat. The rubber studs will not injure the hoof as concrete and steel can. Most find that the mats do move very much, but fasteners can be used if needed. Chute mats are excellent in front of the chute; however, they can be placed in other areas of concern to reduce or eliminate injuries due to falls.



Features

- Very durable
- Metal-free construction
- Quick and easy installation
- 4' wide by 6' long - 1.125 inches thick
- 125 pounds approximate weight

Specifications

- | | |
|--------------|---------------------------|
| • Thickness | 19 mm |
| • Max length | 1,83 m |
| • Max. width | 1,22 m |
| • Weight | 20,36 kg / m ² |



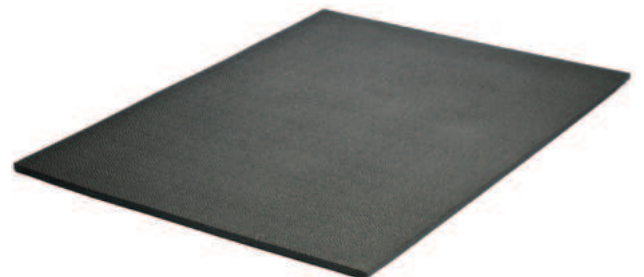
TRANSITION MAT FOR YOUR CALVES

Animat's new product, the Transition Rubber Flooring System, represents the perfect solution for your calves. The Transition mat provides the comfort and security to allow your calves to grow strong with confidence and to perform up to their genetic potential. Specifically designed for calves under 500 lbs (250kg), the grooves under the mat bring maximum comfort.



Features

- Increased comfort
- Softer mats
- Reduces falls
- Easy to clean
- Keep calves cleaner
- Can be cut to specific needs
- Long lasting



Specifications

- | | |
|--------------|---------------------------|
| • Thickness | 19 mm |
| • Max length | 1,83 m |
| • Max. width | 1,22 m |
| • Weight | 20,36 kg / m ² |



DAIRYGRIP FOR WORKING AREA

DairyGrip is an industrial-grade, steel cable-reinforced, rolled rubber flooring system designed to increase cow comfort and mobility while withstanding the extreme demands of sand bedded flush barns and dairy farms using heavy equipment. Supplied in 100' lengths to reduce the number of seams in an install, DairyGrip is ideal for holding pens, travel lanes, and freestall alleys.

Features

- Engineered with premium, heavy-duty, recycled rubber mine belting for maximum durability.
- Proven zigzag surface grooving provides improved cushioning and excellent bi-lateral traction for cows to reduce slips and falls.
- Unique integral steel cable system ensures a longer lasting product by stabilizing the rubber to prevent stretching caused by skid loader scraping and heavy equipment traffic.
- Available in varying thicknesses averaging from 3/4" to 1" to suit your application.
- Easy to handle 100' rolls to reduce the number of seams in your flooring.
- Available in widths from 48" to 80" in 1" increments.
- Long lasting; ideal for high traffic areas and heavy equipment usage.
- Backed by a 10 Year warranty.

Specifications

- | | |
|--------------|---------------------------|
| • Thickness | 19-25 mm |
| • Max length | 30,5 m |
| • Max. width | 1,2-2 m |
| • Weight | 18-45 kg / m ² |





AMMONIA EMISSION REDUCTION RUBBER FLOORING

New Ammonia Emission Reduction System for sloped concrete alleys ensures comfort and safety for your animals. The grooved surface allows for the continuous evacuation of urine towards collection gutters which reduces ammonia emissions by up to 50%.



Key Product Highlights & Performance Benefits

- Grooved rubber flooring system aids in the separation of liquids and solids and effectively channels liquids into collection gutters
- Engineered with 19mm (3/4") thick heavy-duty vulcanized rubber for maximum durability
- Interlocked mats with one-sided bevel for insertion into collection gutter system
- Fast and easy installation using split drive nails
- Constructed from 100% recycled rubber
- DLG certified
- Scientifically proven to reduce ammonia emissions by 50% compared to conventional paved / concrete walking areas
- Textured surface provides excellent grip and traction for cows to reduce slipping and falls
- Helps to reduce surface moisture and humidity levels to prevent dermatitis and lameness
- Walking areas stay drier which improves hoof health
- Increases cow comfort which in-turn improves herd milk production

Specifications

- | | |
|--------------|---------------------------|
| • Thickness | 19 mm |
| • Max length | 1,83 m |
| • Max. width | 0,3-1,1 m |
| • Weight | 20,99 kg / m ² |

INTERLOCK MAT

The affordability of the **Interlock Rubber Flooring System** is the easiest aspect to justify. To lose one cow, for example, due to flooring issues, lameness or splits, doesn't just mean the loss of that one cow. It also includes lost income due to lost milk production, loss of a calf she may be carrying, disruption to the rest of the herd when she's down, lost of time caring for her or removing her from the area, etc. The list goes on and on.....and that's just the loss on ONE cow. How many do you lose in a year to lameness related problems?

Features

- Durable – premium, $\frac{3}{4}$ " thick vulcanized rubber engineered to withstand consistent, high traffic use.
- Slip-resistant – pebble surface texture provides a non-slip surface which increases the cow's traction to reduce slips and falls.
- Comfort – cushions hooves and joints to reduce the risk of lameness and increase cow welfare
- Ease installation – easy to install in tight areas like parlors, milking robots and holding pens



Specifications

- | | |
|--------------|---------------------------|
| • Thickness | 19 mm |
| • Max length | 1,83 m |
| • Max. width | 1,22 m |
| • Weight | 20,99 kg / m ² |



We will be happy to answer any questions you may have. Give us a call or send us an email.

ERSTA s.r.o.

Chlebov 77, 392 01 Soběslav
Czech Republic

+420 702 202 357
petrgondek@ersta.com
www.ersta.com